

## ASK – 2500

# Printer Driver

## INSTRUCTION MANUAL



V1.00  
August , 2009

## **<Index>**

<b>1. Applicable OS</b> .....	3
<b>2. Recommended PC conditions</b> .....	3
<b>3. To install Printer Driver</b> .....	4
<b>4. Functions</b> .....	5
<b>4.1. Display Version Number</b> .....	5
<b>4.2. Layout</b> .....	6
<b>4.3. Paper Size</b> .....	7
<b>4.4. Color correction</b> .....	8
<b>5. To update Printer Driver</b> .....	10
<b>7. To delete Printer Driver</b> .....	12
<b>8. How to use ICC Profile</b> .....	14
<b>9. Troubleshooting</b> .....	16

## **<History of Printer Driver versions>**

Version number	Date released	Changes to previous version	Remarks
1.00	2009/08/13	First version	

Microsoft and Windows are trade marks registered by Microsoft Corporation in US and other countries.

Other trade marks registered by other companies are also referred in this manual.

This instruction manual describes the display menu and operational method by Windows Vista, and may differ from other OS software. For other OS systems, please refer to the manuals provided with each OS software.

## **1. Applicable OS**

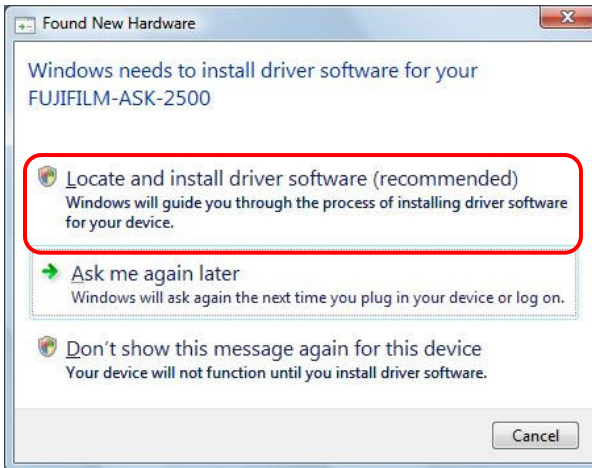
Windows XP SP2 or latest (Japanese/English)  
Windows Vista SP1 or latest (Japanese/English)

## **2. Recommended PC conditions**

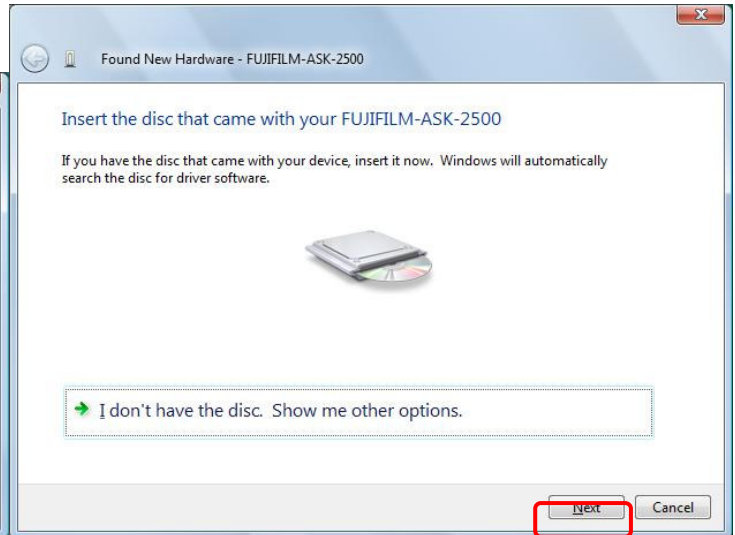
PC	PC/AT PC which has above mentioned OS pre-installed and equipped with USB port (USB2.0 is recommended).
CPU	1 GHz, 32 bit (x86) processor, or 64 bit (x64) processor
RAM	1 GB or more system, Memory 512 MB or more
HDD	HDD with 1GB or more of unused memory space (more space is required during installation).

### 3. To install Printer Driver

- (1) Log-in as Administrator or with the authority of Administrator.
- (2) Insert the Printer Driver CD into the computer.
- (3) When Printer is connected, play and plug will start and will request Printer Driver.
- (4) Select [Locate and install driver software]. (Fig.1)
- (5) Click [Next] after re-confirming the CD insertion to the computer. (Fig.2)

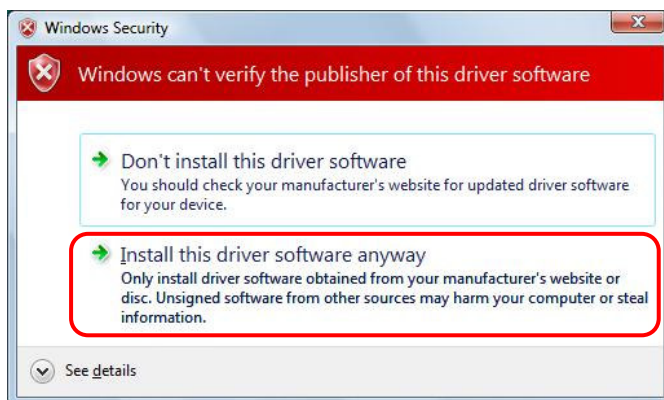


[Fig.1]

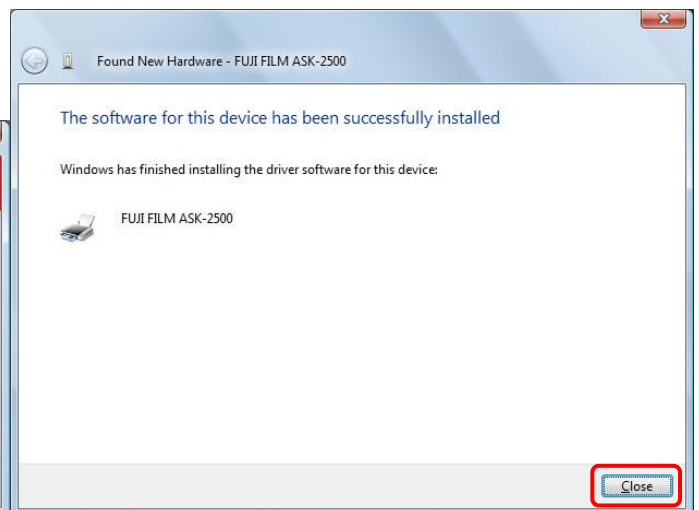


[Fig.2]

- (6) While a warning for non-verified driver software will be displayed, click [Install this driver software anyway]. (Fig.3)
- (7) Click [Close] upon completion of the driver installation. (Fig.4)



[Fig. 3]



[Fig. 4]

## 4. Functions

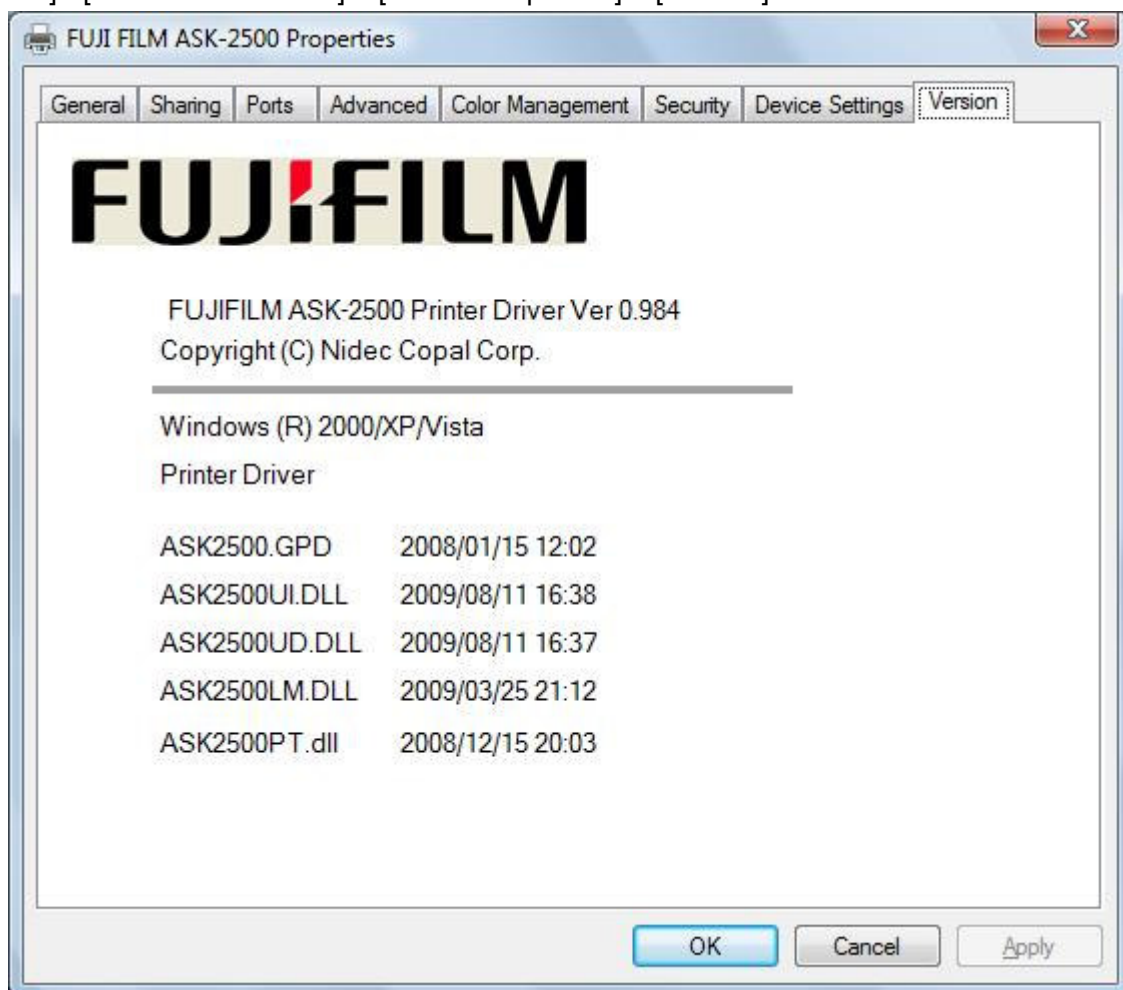
Printer Driver has following functions.

- Display version number
- Function to Set the layout
- Switching between Black & White and Color
- Setting of media size
- Color correction

### 4.1. Display Version Number

(Screen image shown below is an example. Actual screen image may differ from this example).

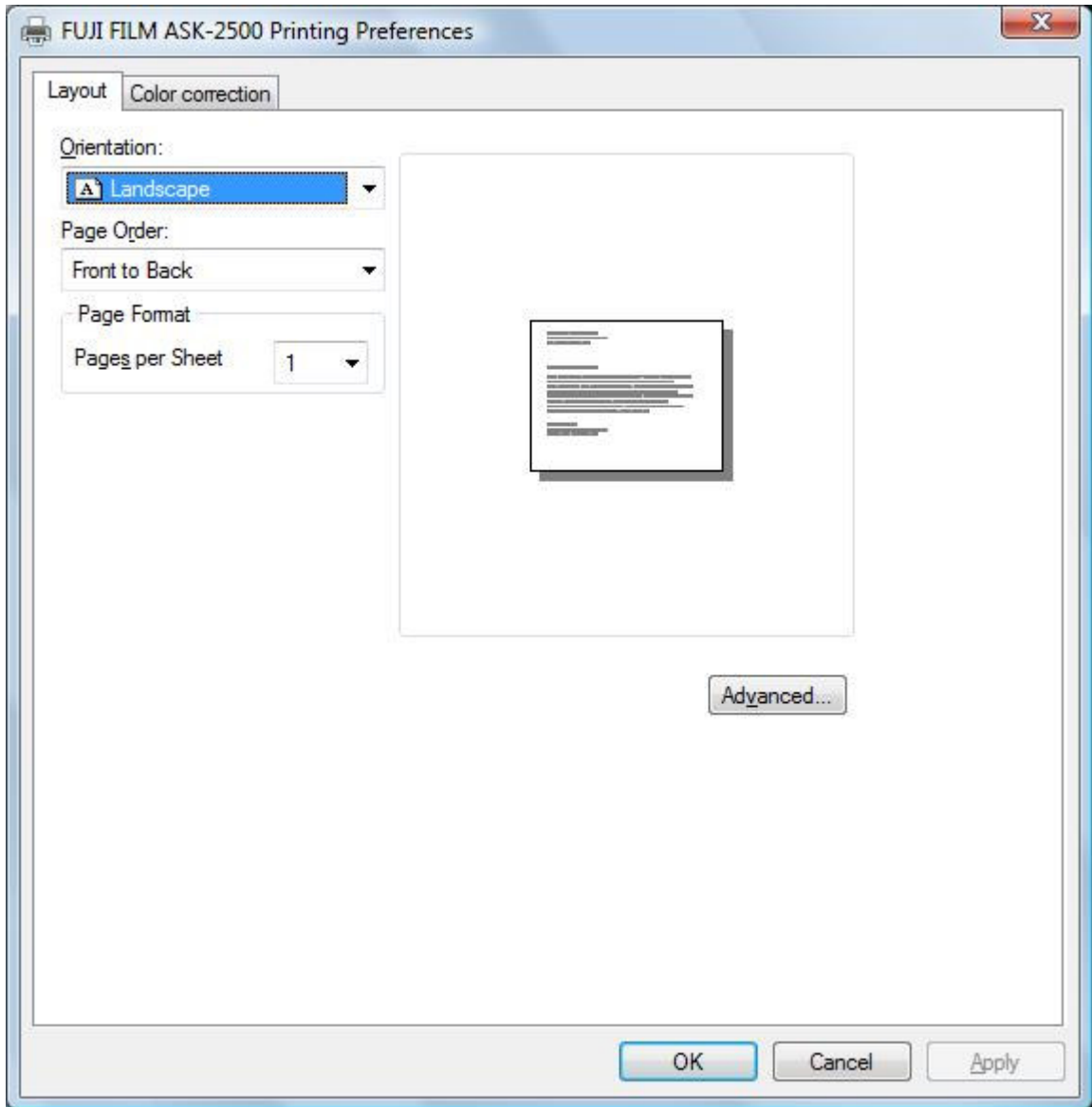
[Start] - [Printers and Faxes] – [Printer Properties] – [Version]



[Fig. 5]

## 4.2. Layout

[Start] - [Printers and Faxes] – [Printer Properties] – [Printing Preferences] – [Layout]



[Fig. 6]

### [Orientation]

This will let you specify vertical or horizontal printing direction. Fitting the image to the specified orientation of the media will be done by the Application Software.

### [Page Order]

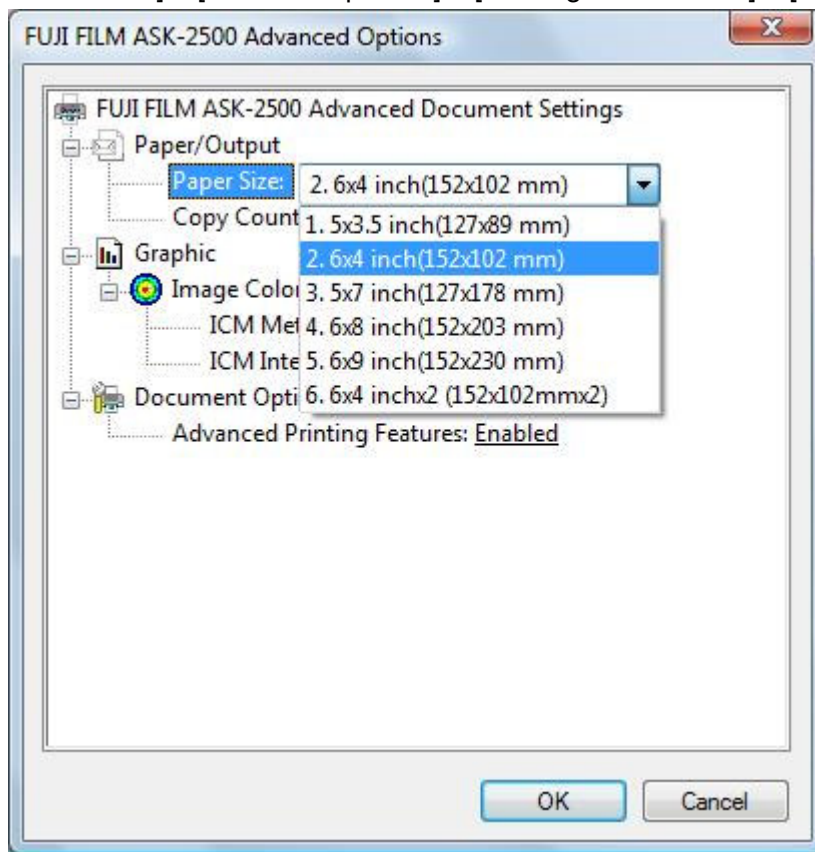
Printing sequence is specified. It is necessary that the Application Software has the function to output multiple pages.

### [Pages Per Sheet]

Multiple pages may be combined into one page. It is necessary that the Application Software has the function to output multiple pages.

### 4.3. Paper Size

[Start] - [Printers and Faxes] – [Printer Properties] – [Printing Preferences] – [Advanced]



[Fig. 7]

[Paper Size]

Media size is selected. It is necessary that the setting of the media here matches the type of media (ink ribbon and paper) actually set in the printer.

"1. 5x3.5 inch (127x89 mm)"

"2. 6x4 inch (152x102 mm)" (Default)

"3. 5x7 inch (127x178 mm)"

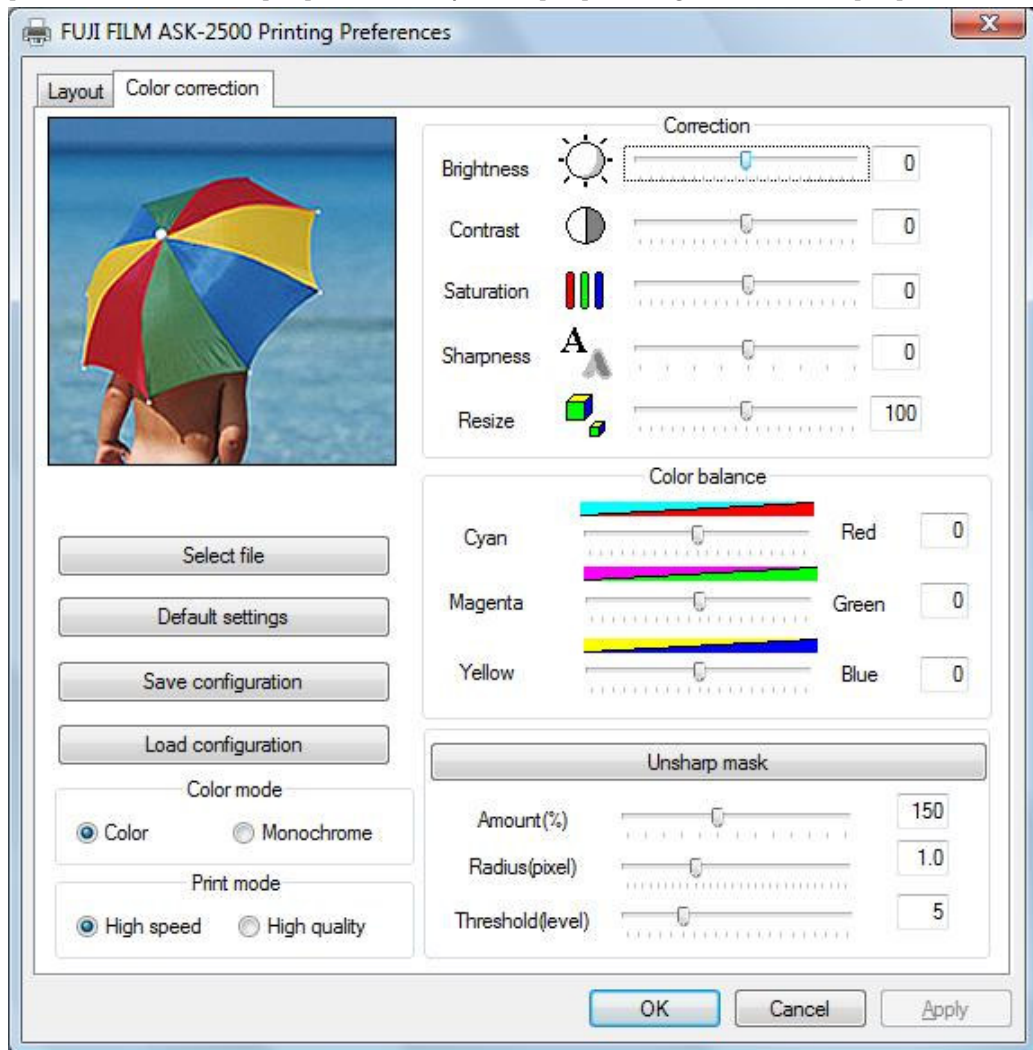
"4. 6x8 inch (152x203 mm)"

"5. 6x9 inch (152x230 mm)"

"6. 6x4 inch x 2 (152x102mmx2)"

#### 4.4. Color correction

[Start] - [Printers and Faxes] – [Printer Properties] – [Printing Preferences] – [Color correction]



[Fig. 8]

##### [Select file]

This will let you choose an image that you like to preview. At Default, the image shown above is displayed. By clicking this button and by choosing an image, the center portion (256x256) of the selected image will be displayed for a preview.

##### [Default setting]

Data may be reset to the original values. Displayed image will return to the standard image.

##### [Save configuration]

You may save color correction data you set. Once the data is saved, it may be called out by [Load configuration].

##### [Load configuration]

Color correction data saved by [Save configuration] may be called out to apply it again.

##### [Color mode]

Either Black and White Print (Monochrome) or Full Color Print (Color) can be selected.

##### [Print mode]

Either High Speed Print mode (High speed) or High Quality Print mode can be selected.



[Brightness]

[Meaning]: Alters the brightness of the image

[Range]: (Dark) -10 to 0 to +10 (Bright)

[Contrast]

[Meaning]: Alter the contrast of the image

[Range]: (Low) - 10 to 0 to +10 (High)

[Saturation]

[Meaning]: Alter color saturation of the image

[Range]: (Low) - 10 to 0 to +10 (High)

[Sharpness]

[Meaning]: Alter sharpness of the image

[Range]: (No adjustment) 0 to +7 (Strong)

[Resize]

[Meaning]: Enlarge/reduce image size

[Range]: (Reduce) 90 to 100 to 110 (Enlarge)

[Red (Cyan)]

[Meaning]: Alter image color

[Range]: -10 to 0 to +10

[Green (Magenta)]

[Meaning]: Alter image color

[Range]: -10 to 0 to +10

[Blue (Yellow)]

[Meaning]: Alter image color

[Range]: -10 to 0 to +10

[Unsharp mask]

[Meaning]: To apply unsharp mask

[Range]: On or Off

[Amount]

[Meaning]: Set unsharp mask level

The level here means the amount of increase in contrast of pixel.

[Range]: 25% to 150 to 325% (in the step of 25%)

[Radius]

[Meaning]: Set the radius of unsharp mask range

Radius indicates the value how sharp the pixels around edge pixels may be made.

[Range]: 0.1 to 1.0 to 3.0 (in the step of 0.1)

[Threshold]

[Meaning]: Set the threshold value for unsharp mask

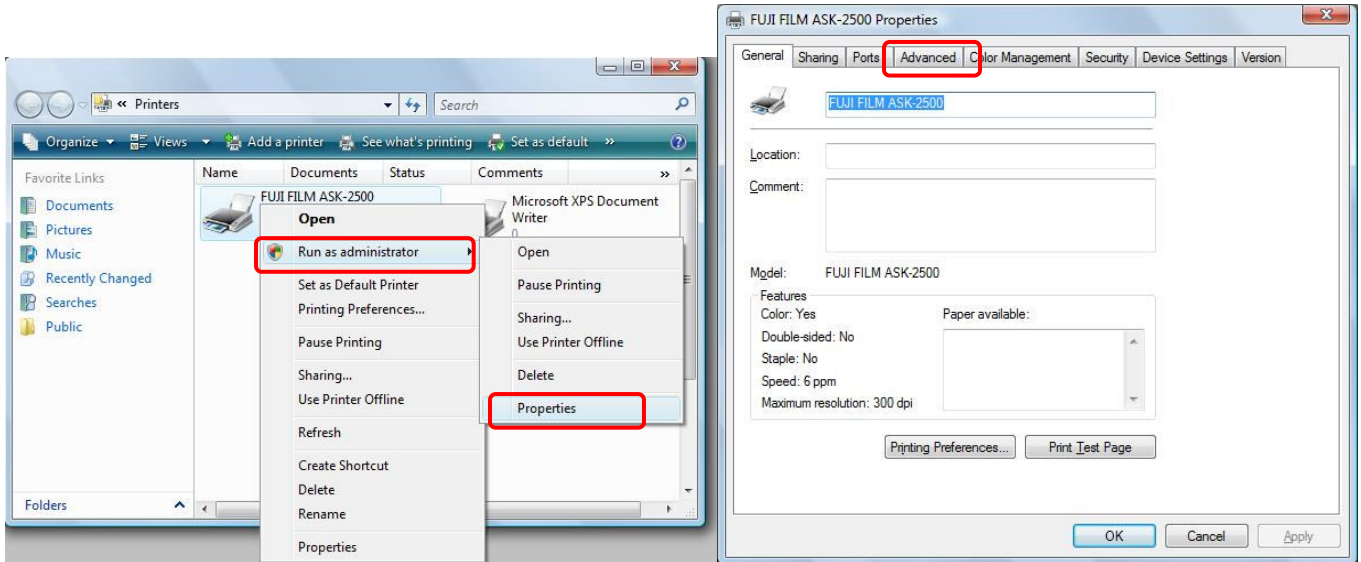
When the difference between pixels and surrounding pixels exceeds the threshold value, these pixels will be considered edge pixels for sharpness adjustment.

[Range]: 0 to 5 to +20 (in the step of 1)

## 5. To update Printer Driver

If the Driver is already installed and the Driver needs to be updated, please take the following steps. Please note that following procedure will not let you go back to the older version Driver.

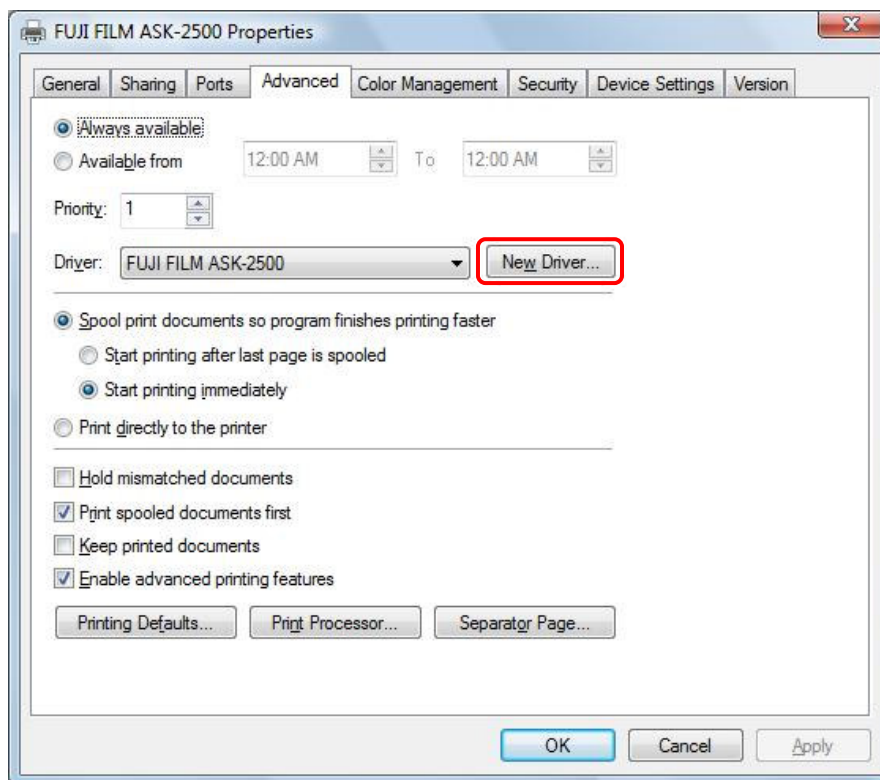
- (1) At [Start] menu, select [Printer and Faxes] to open. Select ASK-2500 Printer. With right click, open menu and select [Run as administrator]-[Properties].



[Fig. 9]

[Fig. 10]

- (2) Select [Advanced] and click [New Driver]

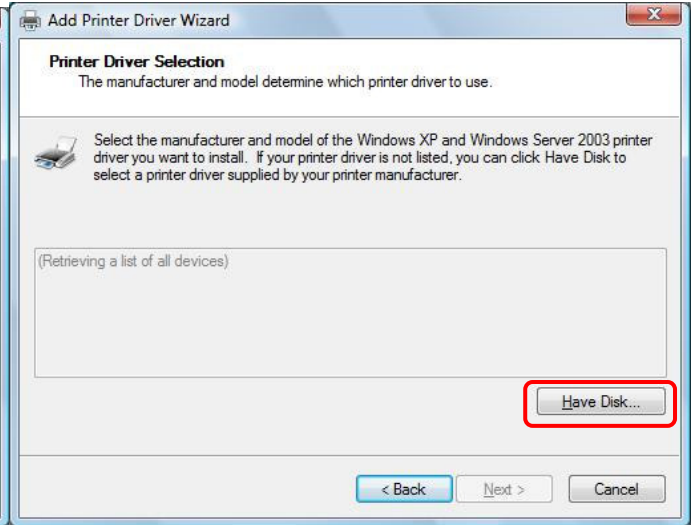


[Fig. 11]

- (3) Driver Wizard screen will be displayed. Click [Next>]
- (4) Driver selection screen will be displayed. Click [Have Disk] and select drive and folder where the new driver is located by [Browse].

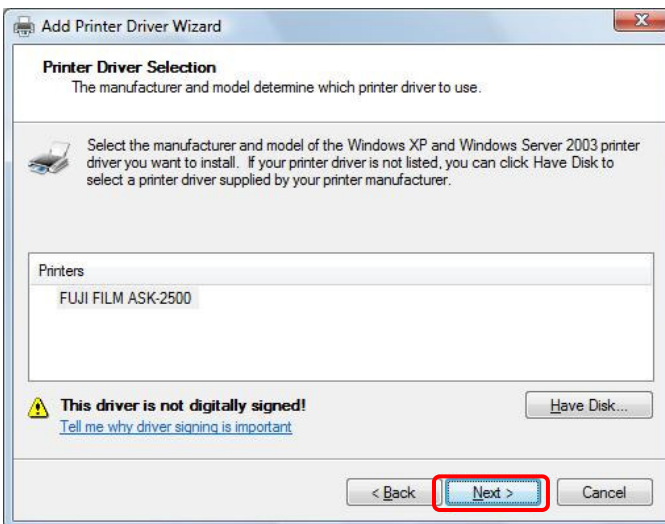


[Fig. 12]



[Fig. 13]

- (5) Select the Driver and click [Next>]
- (6) Click [Finish] to update Driver.



[Fig. 14]



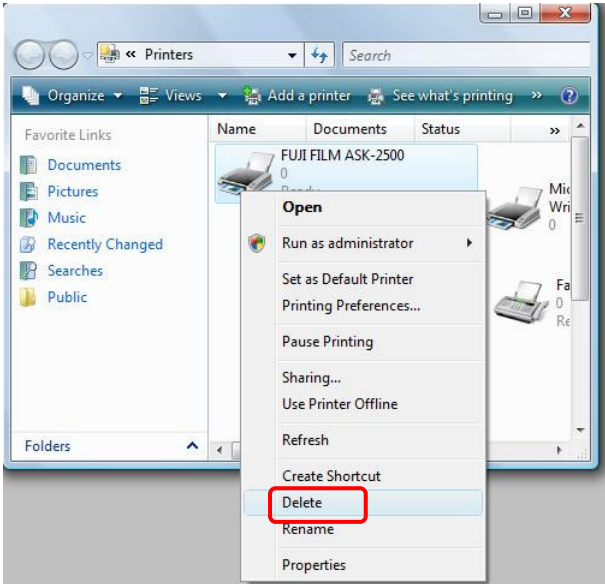
[Fig. 15]

- (8) If you are asked to confirm the location of the driver again during the update, please specify the drive and folder where the new driver is stored.

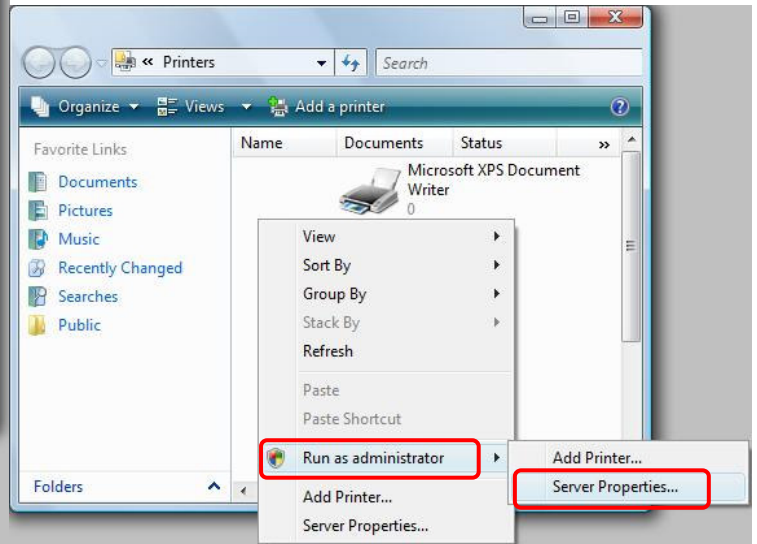
## 7. To delete Printer Driver

Please take following steps if you need to delete printer driver.

- (1) At [Start] menu, select [Printer and Faxes]
- (2) Select Printer name to be deleted and select [Delete] from [File] menu. [Fig. 16]
- (3) At [File] menu, select [Server Properties]. [Fig. 17]

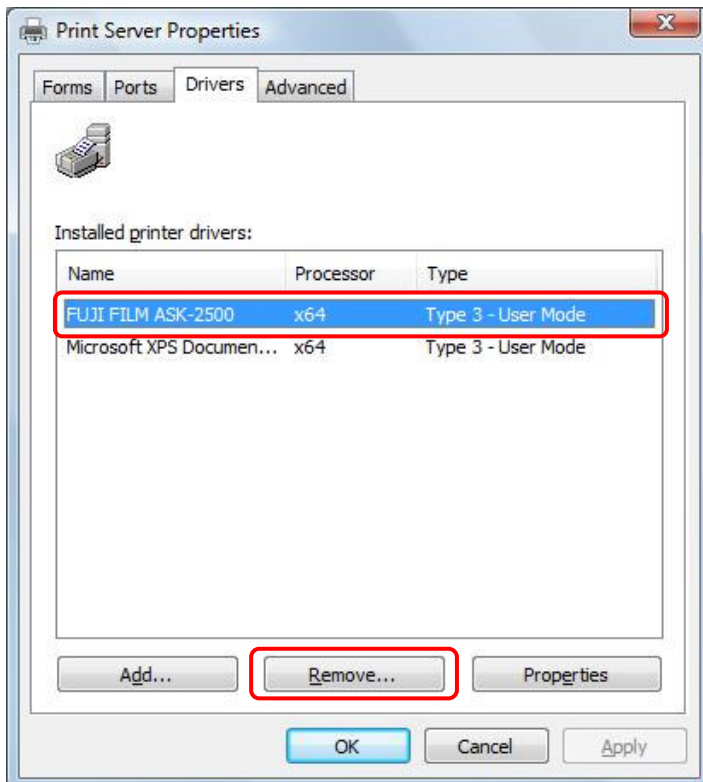


[Fig. 16]



[Fig. 17]

- (4) Click [Drivers] and select the printer name which you need to delete from [Installed printer drivers].

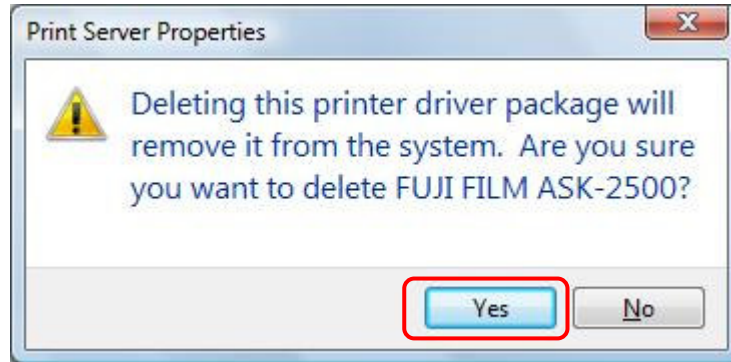


[Fig. 18]



[Fig. 19]

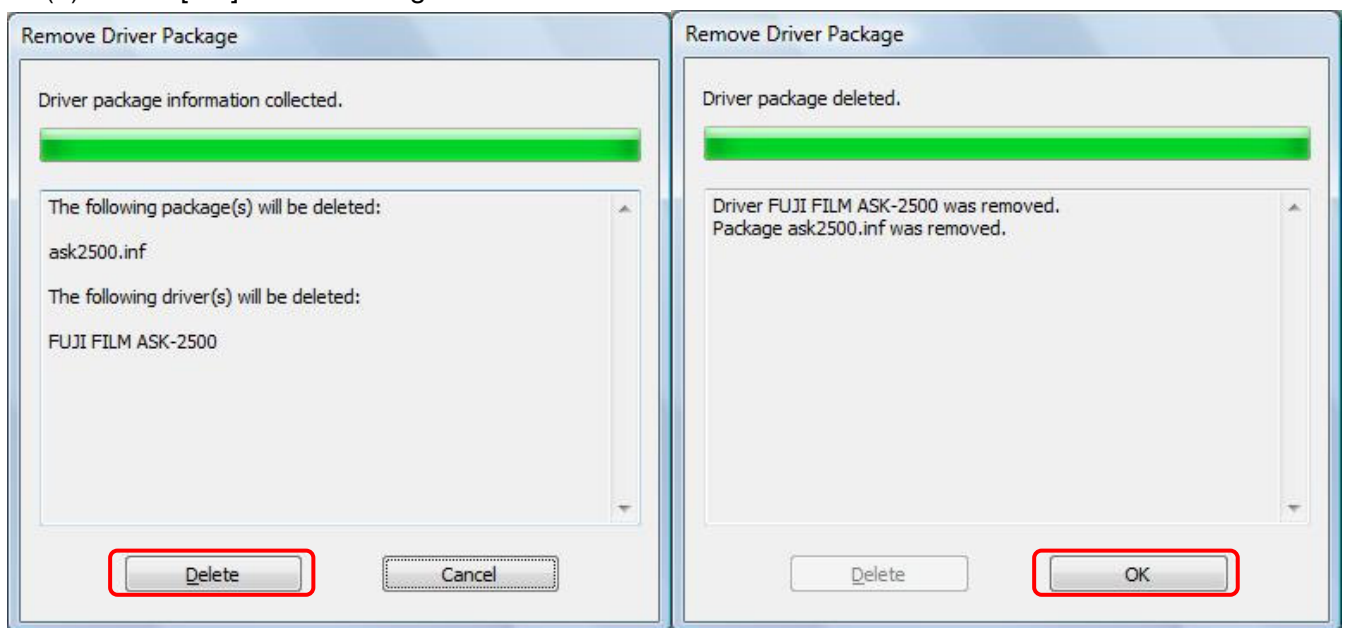
(5) Click [Yes] to delete the printer driver. (Fig.20)



[Fig. 20]

(6) To re-confirm the delete of the printer driver, click [Delete]. (Fig.21)

(7) Click [OK] to finish. (Fig.22)



[Fig. 21]

[Fig.22]

\*A warning [The specified printer driver is currently is use] may appear. If this warning message appears, please restart the PC and try above steps again.

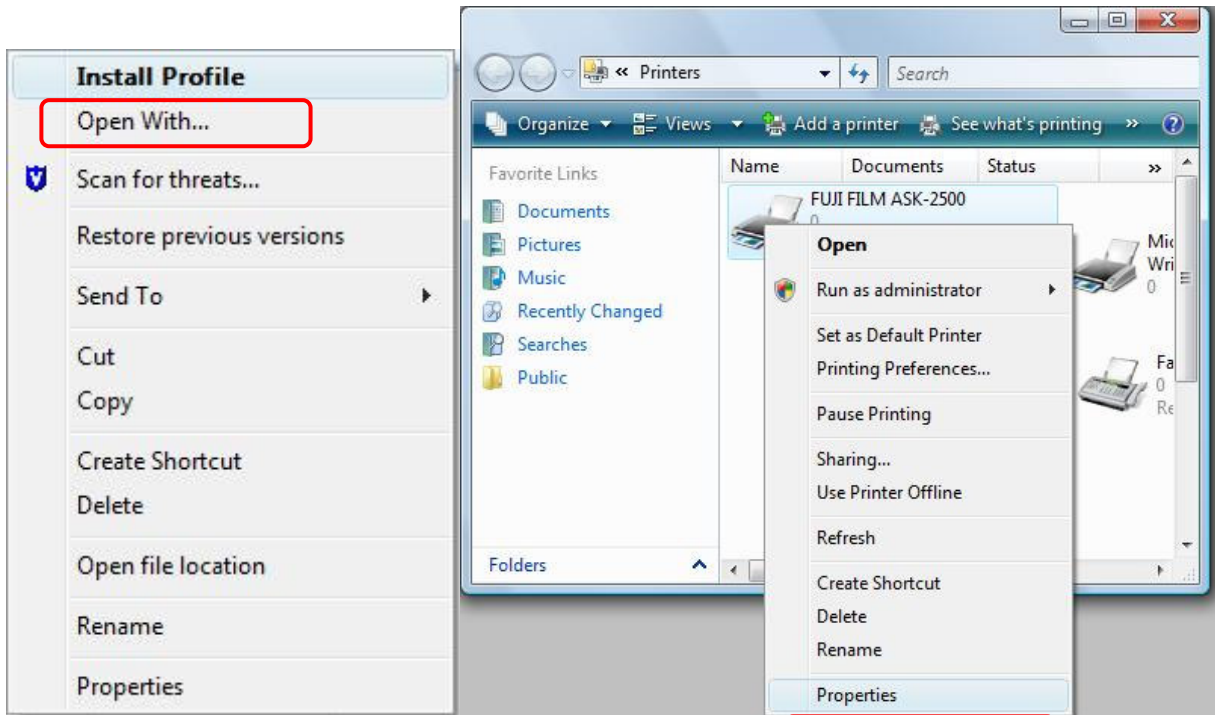
## 8. How to use ICC Profile

(1) Install ICC Profile

- Using Explore, select ICC Profile and right click
- Select [Install Profile] to install ICC Profile

(2) From [Start] menu, select [Printer and Faxes] and click Open

(3) Select Printer that you wish to apply ICC Profile. By right click, open menu and select [Properties]

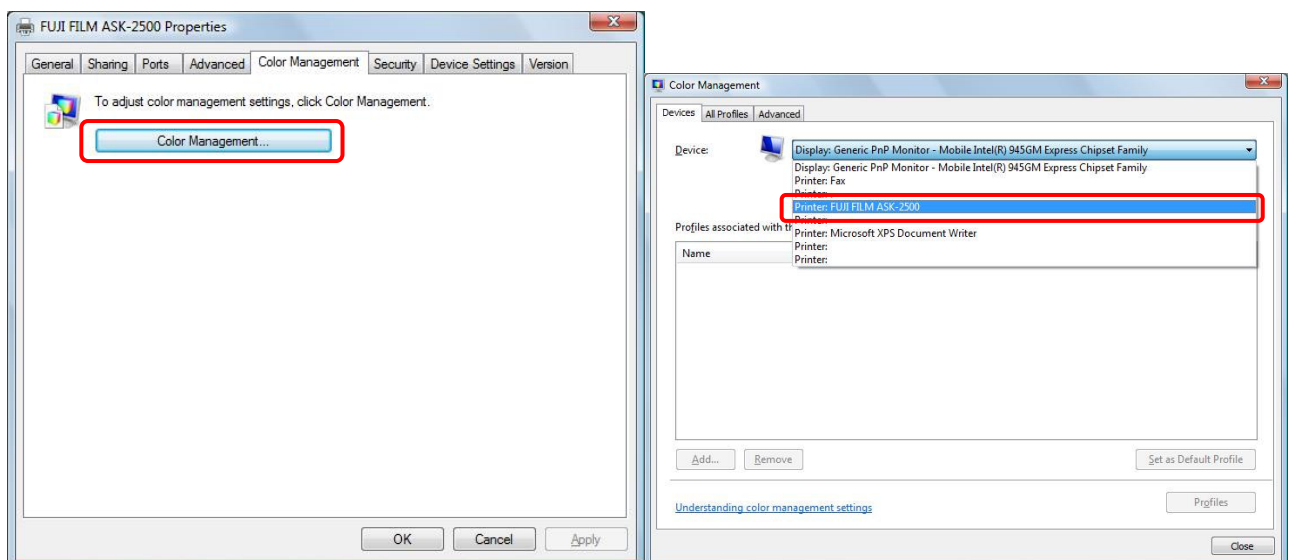


[Fig. 23]

[Fig.24]

(4) Choose [Color Management] tag, and click [Color Management] button. (Fig.25)

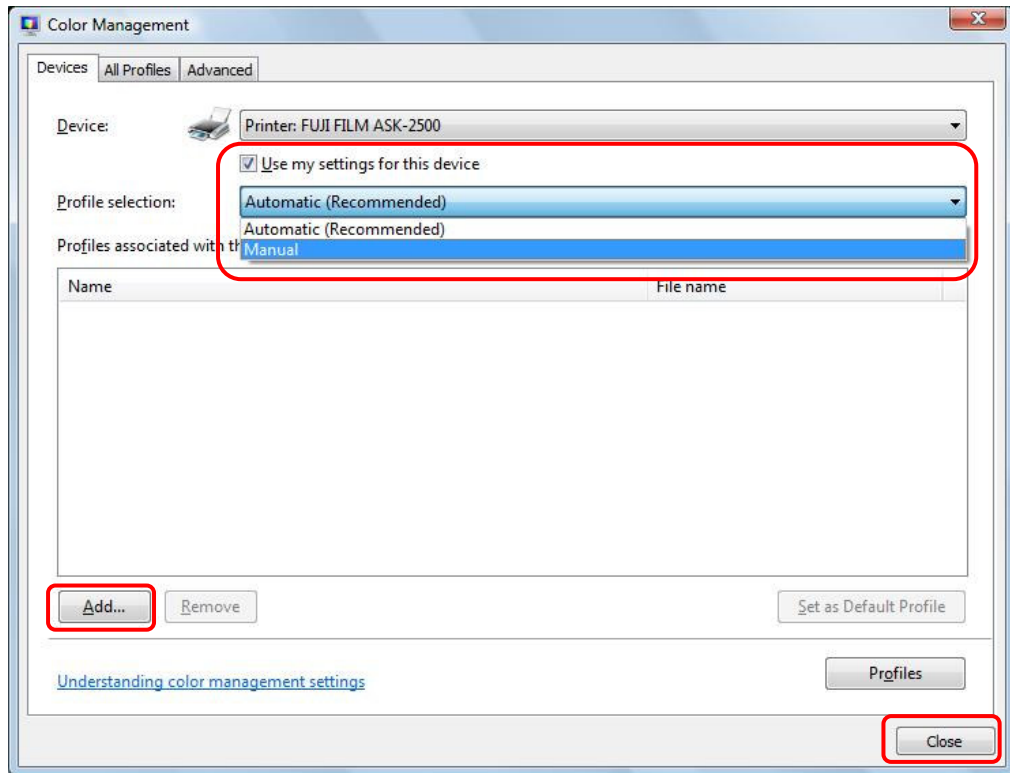
(5) Select [FUJIFILM ASK-2500] from the pull-down menu of [Device]. (Fig.26)



[Fig. 25]

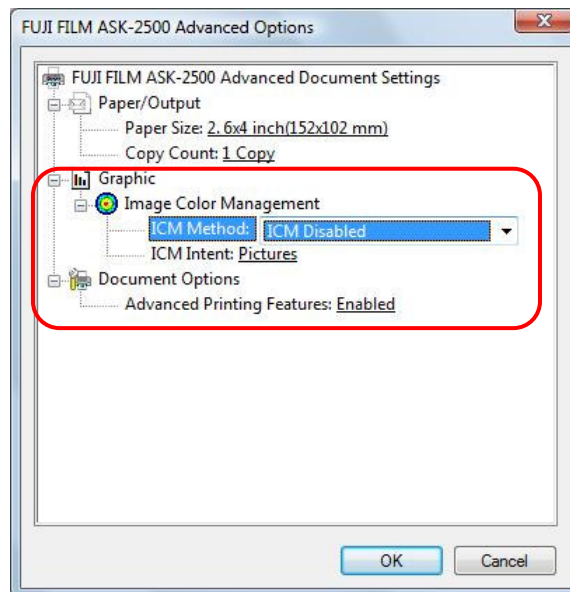
[Fig.26]

- (6) Check [Use my settings for this device] box.
- (7) Select [Color Management] and select [Manual] (Important!!)
- (8) Click [Add] and select ICC Profile that has been installed.
- (9) Click [Close] to finish



[Fig.27]

\* You will find [ICM Method] and [ICM Intent] at [Graphic] in [Advanced] of Printer Driver. Please note that they do not function in this Driver.



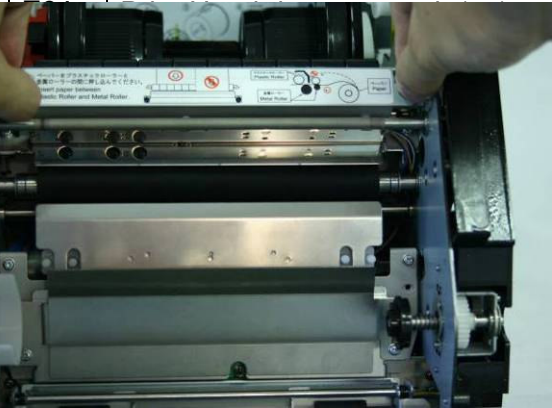
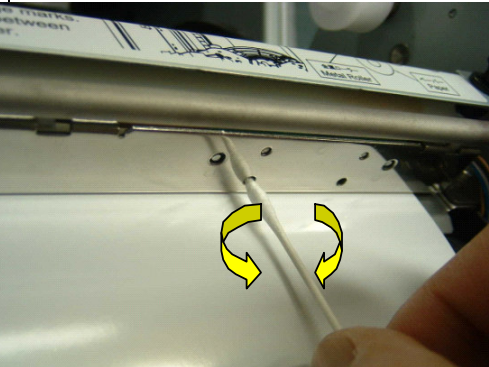
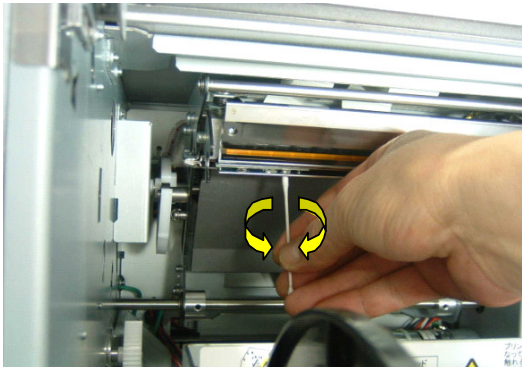
[Fig.28]

<ICM>: Abbreviation of Image Color Management. It is a general term that manages color in Windows

## 9. Troubleshooting

### Error messages

- Error messages requiring power off/on cycle

Error No.	Displayed message	Method of recovery
		<ul style="list-style-type: none"> <li>* Check the "Entrance Cover" if it is properly attached.</li> <li>* Please re-start the printer</li> </ul>
<b>E03</b>	Failed to feed ribbon. Please check the ribbon and re-start the printer.	<ul style="list-style-type: none"> <li>* Please check if the ink ribbon is breaking and/or caught in the mechanism, and then follow the instruction "Ribbon Break-down" in the page 41 to re-set the ink ribbon.</li> <li>* Clean the ribbon sensor.</li> </ul>
		
<b>E04</b>	Error in head controller. Please re-start the printer.	<ul style="list-style-type: none"> <li>* Please re-start a printer.</li> </ul>
<b>E05</b>	Failed to feed paper (forward feed). Please check the paper and re-start the printer.	<ul style="list-style-type: none"> <li>* Refer to the instruction "Paper Feeding Error" in the page 40, and set the paper again.</li> <li>* Check the paper core securely locked. (See Page 26)</li> </ul>
<b>E06</b>	Paper jam during rewinding (rewind feed). Please check the paper and re-start the printer.	<ul style="list-style-type: none"> <li>* Remove remaining paper-slug and/or dust from the paper path if any</li> </ul>
<b>E07</b>	Abnormal paper cutting. Please re-start the printer.	<ul style="list-style-type: none"> <li>* Make sure that paper-slug and/or dust is not put on the cutter.</li> </ul>



<b>E08</b>	Internal command error. Please re-start the printer.	* Please re-start the printer.
<b>E09</b>	Error writing in Flush ROM. Please re-start the printer.	* Please re-start the printer
<b>E10</b>	Failure in power supply. Please re-start the printer.	* Please re-start the printer.
<b>E11</b>	Failure in grip roller movement. Please re-start the printer.	* Please re-start the printer.
<b>E12</b> <b>E13</b>	Please check the room thermistor in the printer. Please re-start the printer.	* Please check the cable to the thermistor securely fastened. * Please re-start the printer.
<b>E14</b> <b>E15</b>	Please check the print-head thermistor. Please re-start the printer.	* Please check the cables to the thermal head securely fastened. * Please re-start the printer. .
<b>E16</b>	Failed to write in EEPROM. Please re-start the printer.	* Please re-start the printer.

## Recoverable errors

- If one of following warning messages is displayed, please take the action described in display.

No.	Displayed message	Method of recovery
<b>W51</b>	Ink Ribbon run out. Please replace the Ink Ribbon.	* Ink ribbon has run out. Please replace the ink ribbon. * This warning message may also appear occasionally when the dust put onto the ribbon sensors. Please try cleaning of the sensors.
<b>W52</b>	Please place a proper size of paper and ink ribbon. Also, check paper size setting of the printer driver.	* Size of the actual media in the printer is not matching to the print order size. (e.g., 5x7-inch media is set to the printer while the print order is 4x6 format.) * Please set the proper size of media, or check the print order setting.
<b>W53</b>	Front door is open. Please close the door.	* Front door is open. Please close the door.
<b>W54</b>	Ink Ribbon is not set. Please set an ink ribbon.	* The ink ribbon has run out. Please replace the ink ribbon and the paper simultaneously.
<b>W55</b>	Roll paper is empty. Please replace the roll paper.	* The paper has run out. Please replace the paper and the ink ribbon simultaneously.
<b>W56</b>	Paper cannot be fed correctly. Please re-set the roll paper.	* Paper is not set correctly. Please re-set the paper roll, and make sure that the leading edge of the paper is properly inserted.
<b>W57</b>	Please place a proper size of paper and ink ribbon. Also, check paper size setting of the printer driver.	* Same as "W52".
<b>W58</b>	Front door is open. Please close the door.	* Same as "W53"

## **<Other troubles>**

### ■ **Printed in black and white**

#### **【Cause】**

[Paper/Quality] setting of the Printer is set as [Black & White]

#### **【Solution】**

Please set [Paper/Quality] of the Printer to [Color]

### ■ **Error message is not displayed**

#### **【Cause】**

Bidirectional communication is not taking place

#### **【Solution】**

[Printer] - [Properties] - [Port] - [Enable bidirectional support] and insert check mark

### ■ **Please place a proper size of paper and ink ribbon (W52/W57) message appears even after making sure that the setting is correct**

#### **【Cause】**

Printer Driver paper setting is not correct

#### **【Solution】**

Paper size set by [Printer and Faxes] - [Printer] - Properties] - [Printing Preferences] - [Advanced] is used by application software as initial value. When Application sets the paper size, the same set value is used. Please check the paper setting at printing application.

### ■ **White paper comes out**

#### **【Cause】**

When Memory or available space in HDD is not sufficient, a white print may come out as image processing failed to take place.

#### **【Solution】**

Please try to increase memory, secure available space at HDD and to close unused application software.